

GUIDE-PRO

2D DIGGING SYSTEM



Upgrade your excavation operations with e-Trak's 2D system, GUIDE-PRO. Specifically designed with operators in mind, this advanced system delivers unmatched precision, enhanced efficiency, and cost-effective performance. Whether you're tackling complex grading, trenching, or leveling tasks, GUIDE-PRO ensures greater accuracy, reduces rework, and optimizes productivity, making every job smoother, faster, and more reliable.

Grade rod capability from inside the cab

Laser receiver

Engineered in Canada

Your machine becomes the rod man allowing for better workforce allocation

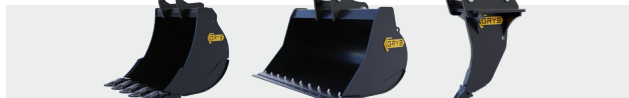
Digging accuracy of $\pm 1/2$ In

User friendly, easy to operate

Combine with the range limiting system LIMIT-Pro in the same tablet



Excavator and
Wheel excavator



Compatible with a wide range of attachments

GUIDE-PRO

2D DIGGING SYSTEM



KEY FEATURES

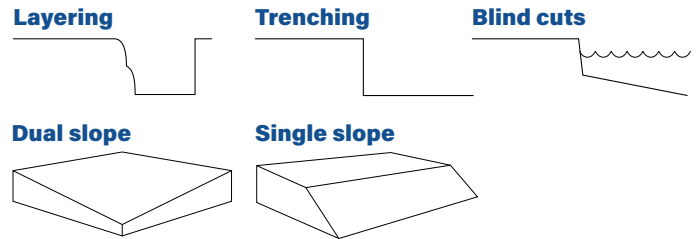
- 1 See 2D patterns and 3D emulated patterns
- 2 Operator dig settings saved into memory - even after the machine is turned off
- 3 Sideway slope

Optional features

- Cab roll angle taken into account for digging system
- Can be used with a job site laser for benchmarking



Laser receiver



Slope + patterns capability

WE'RE HERE TO HELP!

Contact e-Trak to "talk shop" and learn more about how our systems can help your bottom line.
1-866-969-8725 INFO@E-TRAK.CA

Scan and visit our website for our complete product offer.

